



Quail Ridge Emergency Plan

The Quail Ridge Emergency Plan was developed to support the management of major emergencies by advising residents of personal responsibilities and planned procedures. The plan provides local context and compliments the existing Central Okanagan Regional Emergency Plan that works with all resources required in the event of an emergency including: RCMP, Fire Department, BC Ambulance, Interior Health, School District 23, etc. More information is available at www.cordemergency.ca

NOTE: This Emergency Plan cannot anticipate every eventuality but provides “simplified procedures” for residents in the case of most common major emergencies. It highlights the key access routes into the community only and does not outline future initiatives to streamline this accessibility.

Activation Phase

This Emergency Plan is activated by calling 9-1-1, the local Emergency Response System.

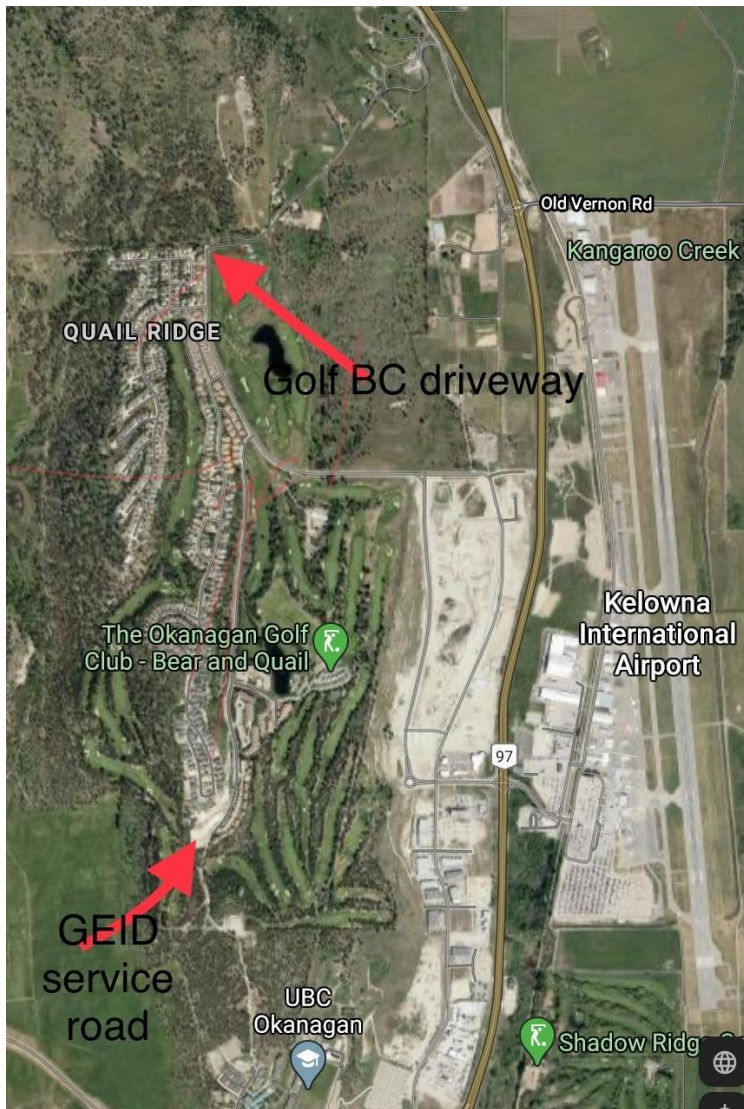
Risk Assessment Phase

In the case of fire, gas leaks, major medical emergencies, the Kelowna Fire Department will be immediately dispatched to respond. Kelowna Fire Department personnel, if first on the scene, will perform an initial assessment and report back to the dispatch and other incoming resources.

In the event of an emergency, including a major gas leak, residents are advised to REMAIN IN THEIR HOMES until advised.

During this phase:

- 1) LISTEN to local media and/or visiting www.corderemergency.ca for up-to-date information and the order to evacuate, if it is deemed necessary.
- 2) PREPARE to evacuate by sealing windows, parking cars inside and gathering personal items for evacuation. (Residents are encouraged to develop personal evacuation and safety plans. See below).



Location of Secondary Access to Quail Ridge

IN THE EVENT OF AN EMERGENCY - DO NOT BLOCK THESE ACCESS POINTS.

Evacuation Order Issued

- 1) LEAVE IMMEDIATELY. Once the evacuation order is issued, leave your property **via Quail Ridge Boulevard, exiting onto Highway 97.**
- 2) REGISTER. Once you have evacuated the area, all residents must register at the Reception Centre to allow emergency officials to track, provide additional support (food, lodging) and reunite family if separated. Emergency officials will advise the Reception Centre’s location when the Evacuation Order is issued.

Secondary Routes for Emergency Personnel Access to Quail Ridge:

- Via Golf BC’s private gated driveway, located at the North end of Quail Ridge Boulevard. This route accesses Dry Valley Road.
- Via GEID’s gated service road along Pine Trail, located at the South end of Country Club Drive. This route accesses the University of British Columbia.

These routes are gated and locked, with access strictly enforced by the City of Kelowna’s Fire Department. The primary purpose of these routes is to ensure that emergency personnel and equipment have access into Quail Ridge.

NOTE: It is the Fire Department’s sole decision to direct residents to use these routes for evacuation. This direction may be part of the initial evacuation order or instituted during the evacuation, with emergency personnel then directing traffic to a secondary route.

Last Updated 09-01-2020

Evacuation Plan Resources

- www.embc.gov.bc.ca/ofc/interface/pdf/homeowner-firesmart.pdf
- www.getprepared.ca
- www.corderemergency.ca